

LPEA Currents

INSIDE ...

- * Youth Tour Winners
- * Compton CREA Board President
- * Benefit for United Way
- * In-House Bill Processing
- * Buy Green Power
- * Students and Electrical Safety

MAILING ADDRESS
 P.O. Box 2750
 Durango, CO 81302-2750

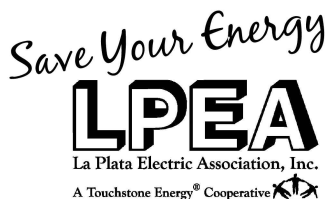
STREET ADDRESS
 45 Stewart Street
 Durango, CO 81303

970-247-5786 Phone
 www.lpea.coop Web

BOARD OF DIRECTORS
 Pam Patton, president – District 4
 Terry Alley, vice president – District 1
 Davin Montoya, secretary – District 2
 John Gardella, treasurer – District 3
 Jeff Berman, director – District 3
 Herb Brodsky, director – District 4
 Harry Cole, director – District 1
 Tom Compton, director – District 2
 Bob Formwalt, director – District 1
 Harry Goff, director – District 3
 Jerry McCaw, director – District 2
 Joe Wheeling, director – District 4

MISSION STATEMENT
La Plata Electric Association provides its members safe, reliable electricity at the lowest reasonable cost while being environmentally responsible.

NEXT BOARD OF DIRECTORS MEETING:
 WEDNESDAY, MARCH 18, 9 A.M.
 LPEA HEADQUARTERS, DURANGO



LPEA's "Green Power" Program Blossoms in 2008

BY MARK SCHWANTES, MANAGER OF CORPORATE SERVICES

Green Power or electric energy produced from a renewable resource, continues to be very important to our local communities. In fact, by the end of 2008, we saw a dramatic increase in the number of participants over previous years. This response, as well as the feedback from local groups, organizations and individuals, leads us to believe we are the right track in supporting generation of electricity from sustainable resources such as wind and solar, as well as the positive environmental benefits that come with it.



Mark Schwantes

In 2008 we reduced the premium to participate in the Green Power program down to \$0.80 per 100 kilowatt-hour block per month. Also, in response to requests and suggestions from you, our members, your board of directors made the decision that one-half of the money received would stay here in La Plata and Archuleta counties. The funds spent locally are used for \$2/watt renewable generation rebates and LPEA-sponsored renewable generation projects. As more members sign up for the program, the more we at LPEA can do for local renewable generation.

I am very pleased to report the following recap of your 2008 GP program:

- 1,725 members are participating in the program (27 percent increase over previous year)
- 26,100 megawatt hours of GP was purchased (2.4 percent of total electricity purchased through LPEA)
- Total green house gas emission reduc-

tions: 22,144 metric tons of CO2

- More than \$100,000 collected and distributed for local projects including:
 - 30 renewable generation rebates processed
 - Two kilowatt PV system installed at area Middle School
- Here are a few of the things we are looking forward to working on this year:
 - “Buy a Block” campaign:
 - To increase awareness of GP program
 - To increase the number of participants
 - To provide funding for community projects
 - Work with Four Corners Office for Resource Efficiency to increase number blocks purchased
 - Our surveys say that more than 50 percent would like to participate
 - Increase the funds available for renewable generation rebates from:
 - Tri-State Generation and Transmission
 - The Governor’s Energy Office
 - Increased member participation

In 2009 we are pleased to be working with Tri-State Generation and Transmission, 4CORE and the Governor’s Energy Office to expand our Green Power funds for local renewable projects.

The goals and objectives that we set for green power continue to be met. This would not be possible without the support we receive from, you our members. For all of those who have signed up and those who will soon, we just want to say “Thanks” and we look forward to working with you to assure we improve on the program in 2009 and the years to follow.



AREA HIGH SCHOOL STUDENTS SELECTED FOR WEEK IN WASHINGTON, D.C.

Megan Bryant, Zeb Cyr and Anthony Porambo will represent LPEA

Area high school students Megan Bryant, Pagosa Springs; Zeb Cyr, Bayfield; and Anthony Porambo, Ignacio; have been selected to participate in the National Rural Electric Youth Tour to Washington, D.C., hosted by La Plata Electric Association and The National Rural Electric Cooperative Association.

The opportunity to participate in the DC Youth Tour, this year scheduled for June 11-18, is open to all area high school juniors who receive their electric power from La Plata Electric Association, and LPEA endeavors to accept a student from each municipal district. No entries were received from Durango this year.

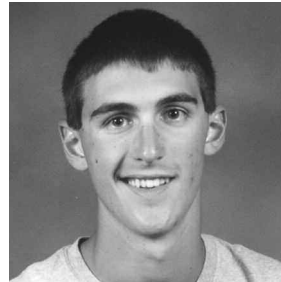
Students completed an application and penned a 500 word essay on an aspect of the electric industry. Their efforts were judged anonymously by an independent committee.

Excerpts of the students' essays follow. To review the complete essays of the winning Youth Tour applicants, visit the LPEA website, www.lpea.coop.

Wrote Bryant, a junior from Pagosa Springs High School, "Though it is unclear just how far technology for the electrical utility industry will take us in our future, one thing is clear, electricity will remain essential for human culture and survival. I believe that it is important



Megan Bryant



Zeb Cyr



Anthony Porambo

for humans to resort to more renewable energy resources ... so we can help ensure the healthy existence of Earth."

A junior at Bayfield High School, Cyr wrote, "Electricity is very important. While we may currently think that the uses we have found for it as of now are numerous, our descendents will most likely look back on this time period... and wonder how we got by ... We currently have but a glimpse of what could be a brighter tomorrow."

Porambo, a junior at Ignacio High School, wrote, "When it comes to electricity, many people tend to think of what they use in their everyday lives, for example, transportation, television, lighting ... What many people fail to realize is, where electricity comes from and what energy sources have helped the electric utility industry produce electric energy for the

whole world."

Bryant, Cyr and Porambo will join juniors from LPEA's sister electric co-ops across Colorado for this once-in-a-lifetime experience. The schedule includes an intimate look at the nation's capital and the government from the inside. Students will explore issues surrounding the electric industry as well as discuss current concerns with national and state Congressional representatives — key in this era of potential energy shortage. Social activities are also on the agenda.

Applications for the 2010 Washington, D.C., Youth Tour will be available in November 2009 through La Plata Electric or area high school counselors. Home-schooled students are also eligible.

For further information, contact Jeanne Bennett, 970-382-3505 or jbennett@lpea.coop.

CREA Re-elects Compton Board President

LPEA board member continues his leadership of statewide trade association

Acknowledging his outstanding leadership, LPEA Director Tom Compton has been re-elected as president of the board of the Colorado Rural Electric Association Board of Directors. CREA is the statewide trade association representing Colorado electric cooperatives such as LPEA.

"I am both humbled and honored to be re-elected," says Compton, a resident of Hesperus who has served on the LPEA board since 1998. "I believe the Colorado Rural Electric Association is a great organization with a long history of representing rural families, and, in more recent times, some families that are no longer so rural but who still maintain the traditions of rural Colorado and the REA movement."



Tom Compton addresses member-owners at the LPEA Annual Meeting.

Originally from Kansas, Compton hails from a solid farm family and continues in the ranching tradition as the owner/manager of the Compton Cattle Company. He holds a master's degree in biology from the University of Alaska and a Ph.D. in zoology from the University of Wyoming.

Throughout his varied career Compton has served on the School District 9-R Board of Education and Basin Co-op Board. He is a member of the Colorado Farm Bureau, founding chair of the Colorado Agricultural Land Trust and a member of the Colorado Cattlemen Board of Directors, where he has also served as president.

Compton's numerous awards include the Faculty Excellence in Teaching Award, 1978; La Plata County Cattleman of the Year, 1991; Outstanding Colorado Rural School Board Member, 1986; and Colorado Association of School Boards Honor Roll, 1986.



LPEA Now Processing Electric Bill Payments in Durango

Nelson tapped to handle LPEA's in-house billing service

To manage La Plata Electric Association's new in-house billing service, Hesperus resident Jackie Nelson has been promoted to billing clerk, a new position within the cooperative.

Until January 1, 2009, LPEA outsourced the processing of electric bill payments to Prescott, Arizona, as it had been the most cost-effective option. LPEA has always been a leading proponent of local economic sustainability, so when techno-

logical advances made bringing processing back to Durango economically viable, it was done.

"Jackie Nelson has been with LPEA for nearly five years serving as a customer service representative," says CFO Dennis Svanes, who oversees the co-op's billing department. "She had been handling many billing issues for our customers, so was a natural to manage the new in-house service."

Prior to joining LPEA, Nelson had

served for more than 10 years as a 9-1-1 dispatcher in both La Plata County and Arkansas.

"Having the remittance center back in Durango is good for our members and good for our local economy," says Nelson, noting that LPEA now enjoys the same technology currently in place at most banks and many retail stores across the country. "Everything is now much more efficient."

Pagosa Brewing "March Madness" Event to Benefit United Way

In the midst of the NCAA basketball tournament, Pagosa Brewing Company will be the site for the inaugural "March Madness" LPEA fundraiser for United Way of Southwest Colorado, March 26, 5-7 p.m.

"United Way is excited to partner with La Plata Electric Association on the first of what we hope will be annual March Madness fundraiser in Archuleta County," says Karen Davison, United Way's Archuleta County coordinator. "By holding this at Pagosa Brewing Company, it promises to be a fun-filled event. We really want to thank LPEA's Jeannie Bennett for all her help in garnering support for United Way."

A voluntary \$1 cover charge and percentage from each Pagosa Brewing brew sold will benefit United Way partner agencies in Archuleta County, including Seeds of Learning, Archuleta County Education Center, Colorado Housing and more.

Pagosa Brewing Company is located at 118 N. Pagosa Blvd., Pagosa Springs. For additional event information, contact Jeannie Bennett, jbennett@lpea.coop.

CELEBRATE ST. PATRICK'S DAY WITH ONE BLOCK OF GREEN POWER

To generate each kilowatt hour of electricity, approximately one pound of coal is burned. Thus, by purchasing one-100 kWh block of Green Power each month, the need to burn 100 pounds of coal is eliminated. "Go Green" this St. Patrick's Day and buy one block of GP from LPEA, and show everyone that southwest Colorado wants to make a difference.

To participate in LPEA's Green Power program:

1. Visit our website at lpea.coop/green_power and complete the online form.
2. Call our office at (970) 247-5786 or toll free 888-839-5732
3. Drop by the LPEA office at 45 Stewart Street in Bodo Park or in Pagosa Springs at 603 S. 8th Street, just north of Pagosa Springs High School
4. Fill out the form below and mail to LPEA at P.O. Box 2750, Durango, CO 81302

Are you a candidate for the LPEA Board of Directors?

Completed petitions are due to LPEA headquarters in

Durango by 10 a.m. on March 25.

For further information, visit www.lpea.coop or call 970-382-3505.

Ballots will be mailed to LPEA's full membership on April 17, with results tallied during the LPEA Annual Meeting, Saturday, May 9, at Pagosa Springs High School.

Yes, sign me up for "Green Power"

Name on account

Account number

Service address

____ (Number of) Green Power blocks at an additional \$0.80 per block per month



Students Learn About Electricity, Magnets and Energy Conservation

In keeping with LPEA's community educational goals, the co-op is once again working with local schools in Archuleta and La Plata counties, conducting a variety of "energy-related" sessions tailored just for kids.

Programs include Exploring Magnets (helping children discover how magnets work), and Energy Efficiency/Renewable Education (including demonstrating the difference between CFL bulbs and incandescents, as well as a beginning discussion of renewable energy) and the Electrical Safety Class. The safety session features a dramatic "arc demonstration" complete with a high voltage line that illustrates the strength of electricity and the consequence when treated with lack of respect.

"While we do not want to frighten children and cause them to think of electricity as dangerous, we do want them to know why electricity demands such careful respect," explains Ray Pierotti, LPEA project specialist. "We hope by reaching a younger segment of our community at an early age when they are receptive to the



Ray Pierotti demonstrates the difference between CFL and incandescent bulbs to students at the Pine River Early Learning Center in Ignacio.

information, we can eliminate future accidents due to ignorance."

LPEA saw its safety efforts pay off last winter as Dusty Turner noticed an electrical line downed by the snow near a friend's home in Forest Lakes. She knew, from her LPEA training, to keep her friends and pets away from the line to avoid electrocution, and to call LPEA for repair.

The programs are targeted to fourth or fifth grade students, but can be tailored



Richard Archuleta demonstrates "the power" of electricity to Needham Elementary students in Durango.

to different ages or groups outside of the classroom. In 2008, nearly 2,100 students received the training. Programs already scheduled for 2009 will address nearly 800 students, and the list grows daily.

"Our goal is to annually present to all fourth and fifth grade students in La Plata and Archuleta," says Pierotti.

To schedule a program, contact Pierotti directly at 970-382-7770 or rpierotti@lpea.coop.

LPEA Building Medical Necessities List

LPEA is currently updating its Emergency Response Plan, in coordination with EMS officials in both Archuleta and La Plata counties. Of prime interest is the updating and confirmation of the Medical Necessities List of member-owners with home medical equipment that requires electricity.

"We hope that folks who must have electricity for their home medical care have back-up generators, and that those generators are installed correctly and receive regular maintenance," says Steve Gregg, manager of operations overseeing the update of LPEA's emergency plan. "But we still want to know who you are so our counties' EMS people can be on alert for your safety, and that we are aware of the emergency need for electricity in your home."

LPEA member-owners with medical equipment are asked to call LPEA customer service, 970-247-5786, and provide the doctor's prescription of equipment, the service address and phone number — including an emergency cell phone number, if available.

All LPEA members are reminded, especially during winter snow and summer lightning storm seasons to keep cell phones, PDAs and laptop computers fully charged to ensure lines of communication are open. In the event of a power outage, give the system about a half-hour to re-set and check LPEA's website (www.lpea.coop) for the "Outage Hotline." If the power remains out and no notice has appeared on the website, members are asked to call and alert LPEA officials, 970-247-5786.

While LPEA makes every effort to restore power as quickly as possible, in the event of a major storm and outage, getting to every outage may take hours or days. Be prepared with flashlights, fresh batteries, extra water and food supplies — and keep the firewood dry. Plus, fill vehicle tanks and have extra gasoline for generators and snowblowers. In a major outage, gasoline pumps (which are powered by electricity) may not function.

CO-OP MEMBERS ASK

Q: *How is the money that comes in to LPEA's Green Power fund distributed?*

A: In accordance with LPEA's Renewable Rate Tariff R18, members have the option to voluntarily purchase Green Power at \$0.80 per 100 kWh per month. This \$0.80 is split in half to support the Tri-State Generation and Transmission Green Power (purchase of generation of renewable power) and LPEA's "local" renewable generation program. For 2008, this meant that \$104,000 went to Tri-State for purchase of renewable wind energy, and \$104,000 stayed in La Plata and Archuleta counties for LPEA's "local" GP Program.

*"Spring hangs her infant blossoms
in the trees.
Rock'd in the cradle of the
western breeze."*

— William Cowper