



La Plata Electric Association, Inc.

A Touchstone Energy® Cooperative 

October 8, 2021

## NEWS

FOR MORE INFORMATION CONTACT

Hillary Knox, Vice President of Member Experience

T: (970)749-6378 E: [hknox@lpea.coop](mailto:hknox@lpea.coop)

### **LPEA begins Bodo Park line improvement project; reroutes traffic on Animas River Trail**

DURANGO, Colo. – This week, La Plata Electric Association (LPEA) began Phase I of its project to replace roughly one mile of underground line serving the Bodo Park area. The project will support future growth in the area and save 7,600 kilowatt-hours annually by reducing line losses. Phase I focuses on the line north of Baker Lane and will be completed by December 31, 2021. Phase II, focused on the line south of Baker Lane, will commence in 2022.

“LPEA designated more than \$18 million in 2021 to conduct needed upgrades to our old electric distribution infrastructure,” said LPEA CEO Jessica Matlock. “This project will immediately reduce the risk of outages in the area and also support future development and growth in Bodo Park. We want to thank everyone for their patience with the detour while we complete this critical upgrade.”

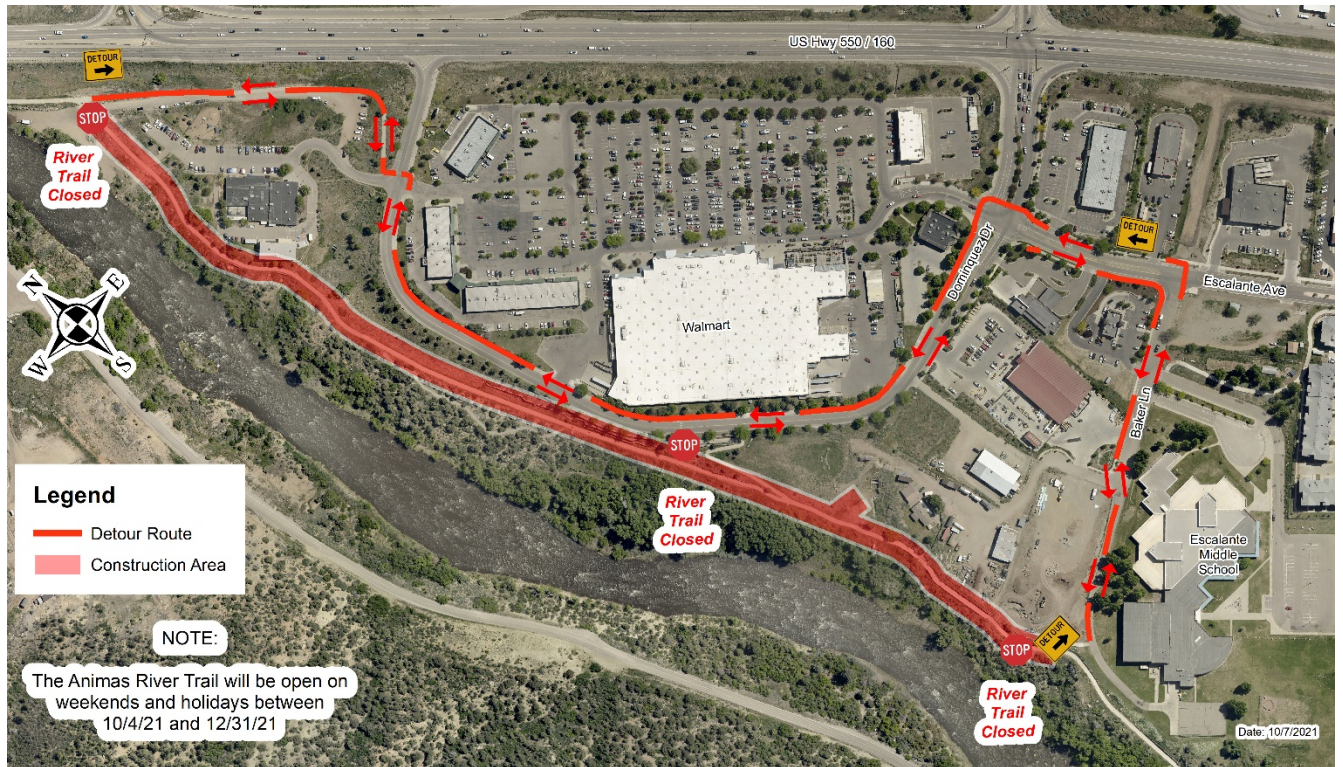
Bike and pedestrian traffic on the Animas River Trail will be re-rerouted Mondays through Fridays for the project’s duration. The trail will remain open to traffic on weekends and legal holidays. The detour begins just north of the La Plata County Humane Society and ends at Baker Lane.

Residents are requested to take note of the detour, follow the signage, and use extra caution in the project area.

For more details on LPEA’s 2021 capital construction projects, visit <https://lpea.coop/construction-updates>.

LPEA is a member-owned, not-for-profit electric distribution cooperative serving La Plata and Archuleta, with segments of Hinsdale, Mineral, and San Juan counties. LPEA is the fifth largest cooperative of 22 in Colorado and aims to provide safe, reliable electricity at the lowest reasonable cost to approximately 34,500 members. For additional information, contact LPEA at (970) 247-5786 or visit [lpea.coop](https://lpea.coop).

## Detour Route Map



###