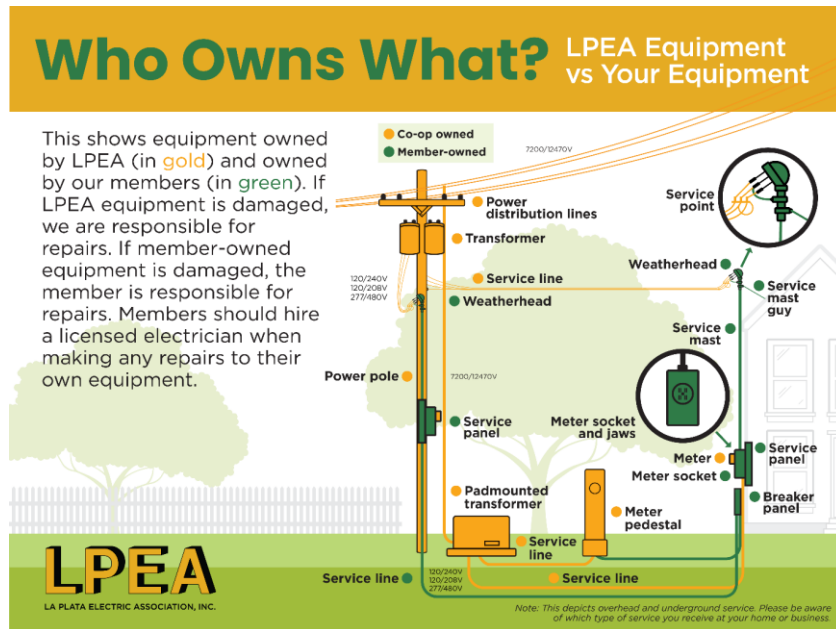




## Meter Socket Adapters Prohibited Installations

*La Plata Electric Association, Inc. reserves the right to deny the use of an MSA for any purpose and at any point during the interconnection process. This is a non-exclusive list of prohibited installations to aid members and their installers in determining whether a MSA will be allowed. However, LPEA may determine at its sole discretion that an MSA is not allowed in a particular instance even if that is not documented on this list of prohibited installations.*



- 1) Any meter socket that is not owned by the member, including a meter pedestal. Meter sockets physically located on member-owned facilities (i.e. exterior walls of homes) are member-owned.
- 2) Any meter socket other than a 2S 240V 200A.
- 3) Any metering configuration with CTs and/or PTs.
- 4) Meter sockets that are not securely attached to the building.
- 5) Ganged meter sockets where the conduit and socket adapter would impede access to adjacent sockets.
- 6) Any location where a Shark fin collector is installed behind a meter.
- 7) Meter sockets that already have another meter socket adapter (aka 'meter collar' like a surge protector). *\*The member could ask LPEA to remove the surge protector and then a MSA could be used.*
- 8) If a member has a pigtail meter (Ex. KV2c meter) for controlling an ETS. *\*The member could have LPEA remove the pigtail meter and then use a PLC Connect or time clock to control the ETS and then a MSA could be used.*



## **EXAMPLES OF PROHIBITED METER SOCKET ADAPTERS**



1) Meter Pedestal



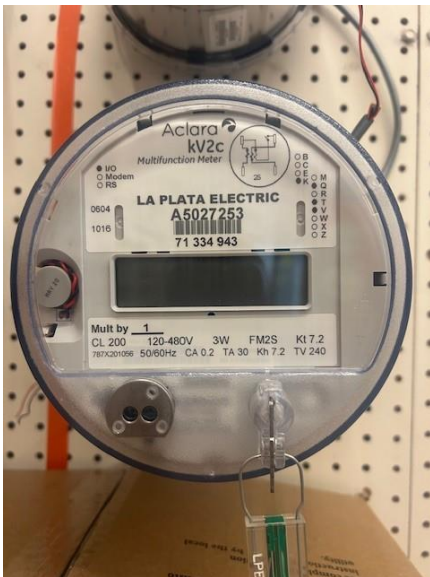
5) Ganged Meters



6) Shark fin



7) Surge Protector



8) kv2c Meter



8) Pigtail Meter