



La Plata Electric Association, Inc.

A Touchstone Energy® Cooperative 

June 17, 2020

NEWS

FOR FURTHER INFORMATION CONTACT:

Hillary Knox, Vice President of Communications

T: (970)749-6378 E: hknox@lpea.coop

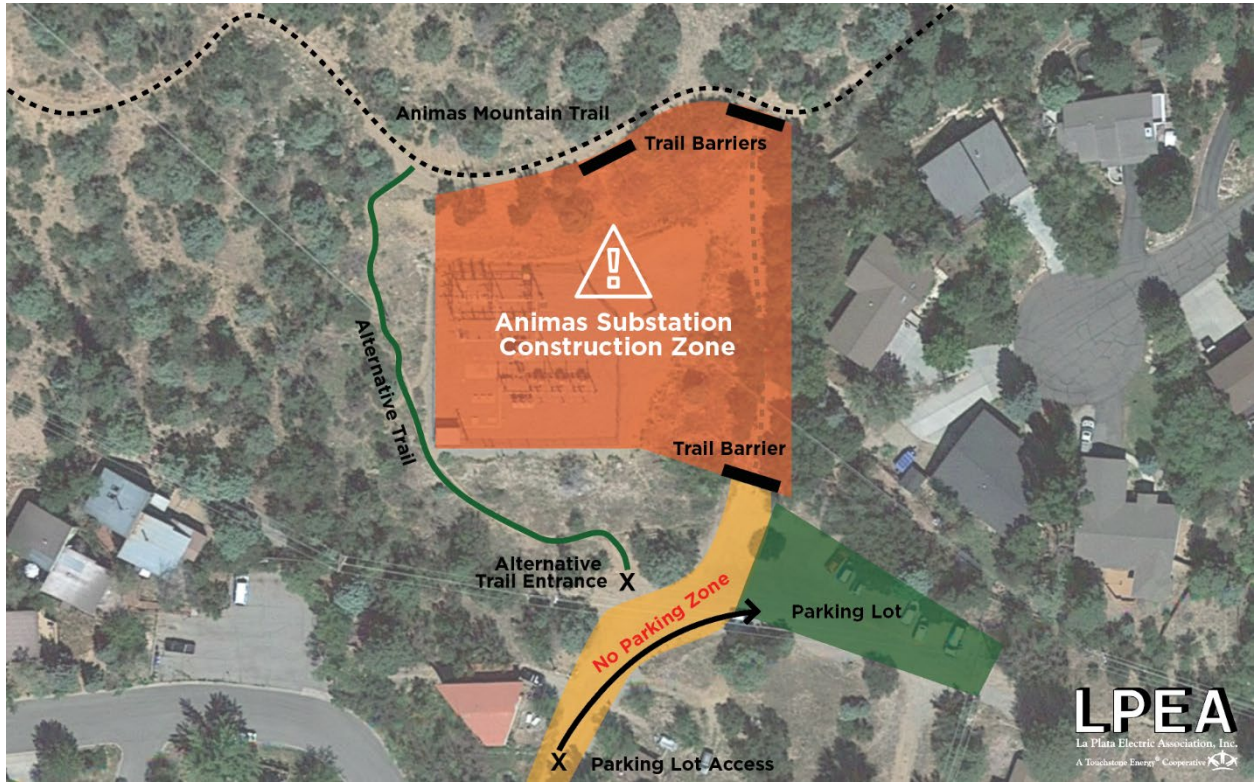
LPEA begins Animas Substation improvement project; reroutes popular trailhead

DURANGO, Colo. – The week of July 6th, La Plata Electric Association (LPEA) will begin upgrading its Animas Substation, which feeds electricity to roughly 3,000 LPEA members in the North Durango and Junction Creek areas. The project will increase reliability, safety, and efficiency of power distribution by replacing aging equipment with new technology. It will also support the future electrical needs of residents and businesses in the area.

“LPEA designated more than \$16 million in 2020 to conduct needed upgrades to our aging electric distribution infrastructure,” said LPEA CEO Jessica Matlock. “The Animas Substation rebuild is just one of the projects we are undertaking to ensure we can continue to power the lives of our community, safely and reliably.”

Construction in and around the substation, located near the East Animas Mountain Trailhead on 32nd and W 4th Avenue in Durango, is expected to continue into October of 2020. During that time, trailhead parking will be limited along 4th street and access to the trailhead will be re-routed to an alternative trail. Users are requested to park only in allowed areas and keep their dogs on leash. Given the narrow nature of the alternative trail route, bikes are also asked to maintain a safe speed and yield to pedestrians.

LPEA is a member-owned, not-for-profit, electric distribution cooperative serving La Plata and Archuleta, with segments of Hinsdale, Mineral and San Juan counties. LPEA is the fifth largest cooperative of 22 in Colorado, and aims to provide safe, reliable electricity at the lowest reasonable cost to its approximately 34,000 members. For additional information, contact LPEA at 970.247.5786 or visit www.lpea.coop.



###